

# F2000 FUME FILTER UNIT

## INSTRUCTION MANUAL

Please read these instructions carefully before using this unit.

### 1: Product Overview

The F2000 is designed to filter laser cutting fumes from the Emblaser range of machines.

With a triple-filter design and powerful suction, the absorbing efficiency and filtration ratio can reach 99.97%. The purified air can be discharged directly indoors.

### 2: Packing list

ITEM	QUANTITY	REMARKS
Filtration Unit	1set	
Power Lead	1 piece	
Hose Adaptor	1 piece	75mm to 50mm exhaust hose
User Manual	1pcs	
Pre-Filter	5 pieces	Consumable. Inspect regularly.
Middle Filter	1 set	Consumable. Inspect regularly.
Main Filter	1 set	Consumable. Inspect regularly.

### 4: Safety Considerations

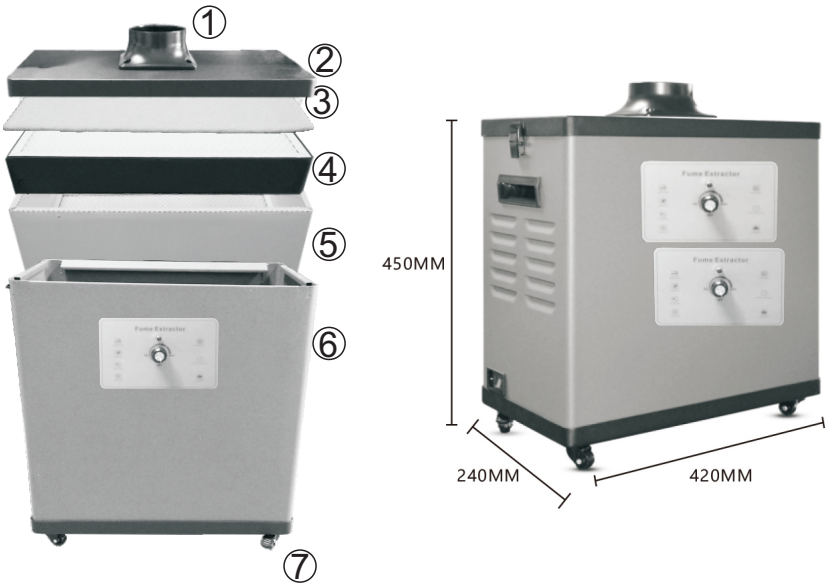
- 1.Do not use in environment temperature above 80 deg C.
- 2.Do not use in flammable, explosive or greasy environment.
- 3.Do not disassemble this unit for repair.
- 4.Do not replace filter elements while unit is running.
- 5.Hands or other objects should not touch the rotating impeller.

### 3: Important: Check Before Using

Before plugging in the power for the first time:

1. Is there any external damage?
2. Is the power switch is set to OFF position;
3. Are the filters correctly installed?
4. Is the body cover secured correctly?

### 5: Structure and dimensions



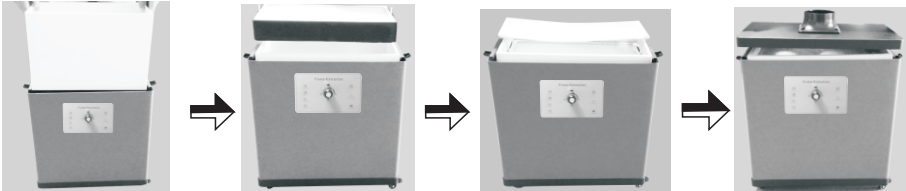
- ① Air inlet flange  $\phi 75$
- ② Top cover
- ③ Pre-filter
- ④ Middle Filter
- ⑤ Main Filter
- ⑥ Machine body
- ⑦ Roller wheels

### 6: Performance index

Air Inlet Interface	$\phi 75\text{mm}$ Flange
Input Voltage	AC220V /110V
Maximum Power	150W
Air Velocity	11m/s
Filtering Efficiency	$0.3\mu\text{m}$ 99.97%
Noise	<50dB
Systemic Flow	$215\text{m}^3/\text{h}$
Dimensions	L425×W250×H410
Weight	15.0kg

### 7: Operation

#### 7.1 Filter core installation



- ①, QVHUW ODLQ )LWUHU U L ③ LO U 3U ④ U F L

#### 7.2 Duct Installation Instructions

Install the ducts on the flange of top cover as shown in the below pictures:



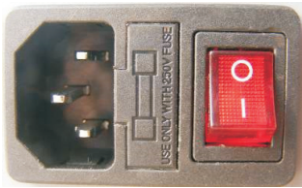
Rotate the ducts and adjust the nozzle near to the smoke-producing area. Then adjust the smoke-absorbing distance according to different occasions.



- ♦Attention: While adjusting the direction of the duct, the duct body shall be kept flat or bent gently. Otherwise, it will affect the suction power. The nozzle shall be facing the working positions. The distance shall be kept within 150mm.
- ♦Attention: The machine shall not be used at places with strong air mobility, which will cause the reduction of the suction power.

#### 7.3 Operation instruction

- 1.Plug in and check if the power plug is properly fit into the socket.
2. Turn on the power switch (Picture 1) and adjust the speed adjustment knob to make the machine work according to the required air volume(Picture 2)



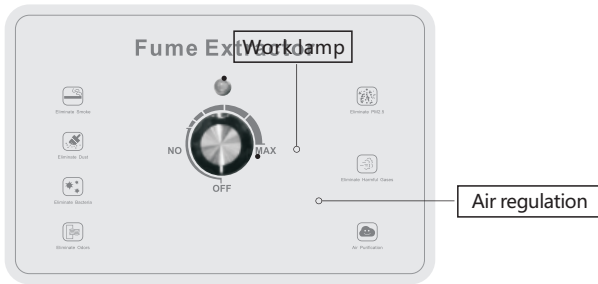
Picture 1



Picture 2

- ♦Attention: Before starting the machine, please check whether the switch is close. Wind volume adjustment is based on actual needs, not too large or too small, too large to absorb air, and also increase power consumption and noise.

3.Illustration of Control Panel:



8、Troubleshooting

♦**Make sure the power is switched off before inspecting or repairing!**

Problem 1: The machine still works, but the air flow is very weak and suction power is greatly reduced.

Cause: Air Inlet is blocked or foreign body exists inside the duct. The filter becomes saturated and hence gets blocked and gives an alarm.

Solution: Turn off the power and open the top cover. Check if there is any foreign body blocked in the air inlet. Then check if the air vent is blocked or not. If the suction power of the empty-loaded machine is normal, it means the filter needs to be replaced.

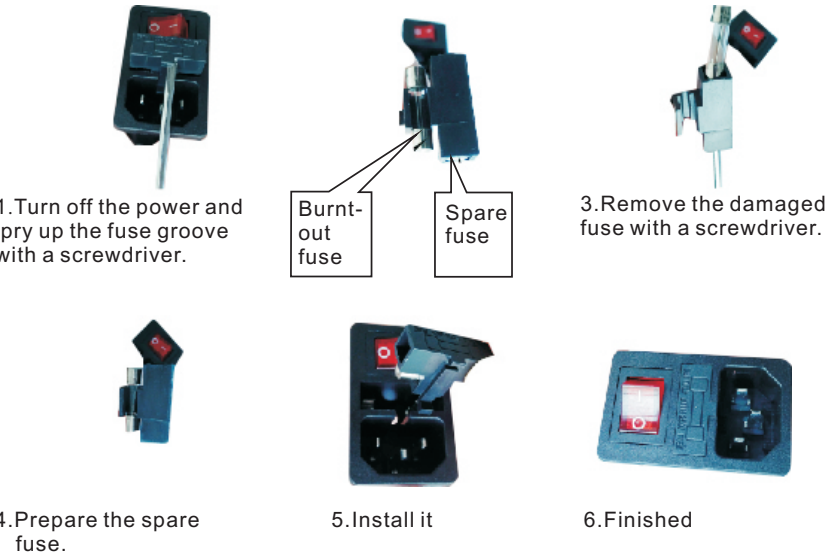
Problem 2: The machine shuts down automatically after it is just started. Even if you restart the machine, the same problem happens again.

Cause: The air flow inside the machine is not smooth. The obstruction of the filter is very strong. As a result, the starting current of the fan becomes very high, hence the machine shuts down automatically for self protection.

Solution: Turn off the power and open the top cover. Check if there is any foreign body blocked in the air inlet. Then turn the speed-adjusting knob to the lowest level and restart the machine. The machine will be back to normal.

3.Turn the power switch on if the, power indicator does not light up, the fuse might be bad and needs to be replaced, the replacement fuse steps:

Operation setps to replace the fuse:

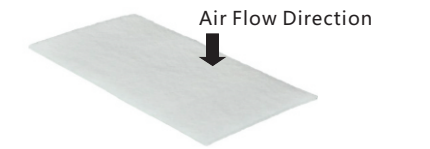


If the trouble remains after these inspections and maintenance, please contact the manufacturer or dealer.

9、How to use and maintain the filters

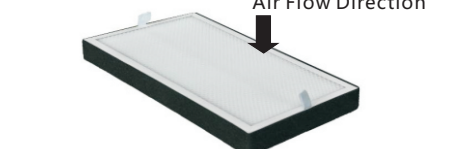
This product uses replaceable filtering consumables. When the consumables have been use to a certain extent, they need to be cleaned or replaced, in order to guarantee the good purifying effect of the machine.

1.Pre-filter



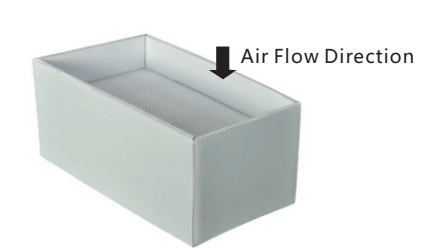
Using method: Place the Pre-filter on top of Middle Filter. The front side (rough side) is facing upwards (air inlet direction). When the accumulated dust on the Pre-filter is over 70% and cannot be cleaned any more, please replace the Pre-filter with a new one.

2.Middle Filter



Using method: With the handle side facing up, put the Middle Filter inside the Main Filter. It shall be immediately cleaned off when the accumulated dust on the Middle Filter evidently affects the suction power. When it cannot be cleaned any more, please replace the Middle Filter with a new one.

3.Main Filter



Using method: With the handle side facing up, place the Main Filter at the bottom inside the machine. When it cannot effectively eliminate the peculiar smell in the smoke, please replace it with a new one.

10、Attentions

- 1.The power input of this product shall be used with in the specified nominal voltage scope（subject to power identification on the product body）. It’ s strictly forbidden for the use with excessive high or low voltage, if the ambient voltage is unstable, please turn off the machine, unplug the power plug and use it again upon power stabilizing
- 2.While using the machine, the ambient temperature range of the gas and the dust sucked into the air inlet: atmospheric temperature - 60 °C, never use it when the temperature is higher or lower than this temperature scope.
- 3.When using the machine, the humidity of the gas and the dust sucked into the air inlet should be between 40%-80%;if the humidity is excessively high,the filter element will become invalid rapidly rapidly and the internal circuit will be damaged; never use it when the humidity is higher than 80%
- 4.When the machine has primary cotton filter, properly install the primary cotton filter before use, primary cotton filter can be classified as disposable consumable and never use it again after washing, please replace the primary cotton filter configured by the original manufacturer, regularly. never use the machine without primary cotton filter or with poor primary cotton filter,(poor or washed primary cotton filter over the market performs poorly and medium and high-efficiency filter element in the subsequent stages will be blocked up or become invalid quickly and cause greater losses! )

5.It’ s strictly forbidden to use this machine without a filter element, because the cooking fume or the dust particle sucked in the machine directly would cause damage to air blower and control system. Any fault caused by machine use under the aforesaid status shall be serviced at the user’ s own cost, there for greater losses can be caused

6.It’ s not permitted to continue to use the machine when the filter element or the filter cotton is blocked up. This will greatly shorten the service life of the machine, even damage the machine, please clean and maintain the machine regularly and replace the filter element regularly to ensure the machine’ s working in good condition

7.In case your machine filter element is blocked up, the suction force is lowered or the filter element for foreign odor removal fails for foreign odor removal, it's not permitted to use this machine by reducing the machine's number of layers of the filter elements or without putting in primary filter element or cotton. Please replace it with the filter element and primary filter cotton configured by the original manufacturer.

8.Never open the machine for maintenance by yourself, the warranty sticker on the machine is the only voucher for you to enjoy after-sales service, so please don’ t tear it up or damage it

**We will not undertake any of the losses above. Such losses are not included in the warranty.**